



***EMILIA MOSCA***

***Characteristics of  
an educational style***



**EMILIA MOSCA**

*Fizza Monferato 30, 8, 94*

*affez. sua Emilia  
Figlia di Maria Aus.*

**THE AUDACY OF A SALESIAN EDUCATOR**

## *She gave a genuine Salesian imprint to the education of the young*

**«She knew how to earn the esteem and affection of her pupils and always obtained what she wanted of them. She was gentle, but strong and firm in her demands. She had the art of making herself loved and feared [...]. She made herself all to all, she listened to us with motherly affection. She was always ready to sacrifice herself for everyone.»**

*(Teresa Pentore, past pupil)*

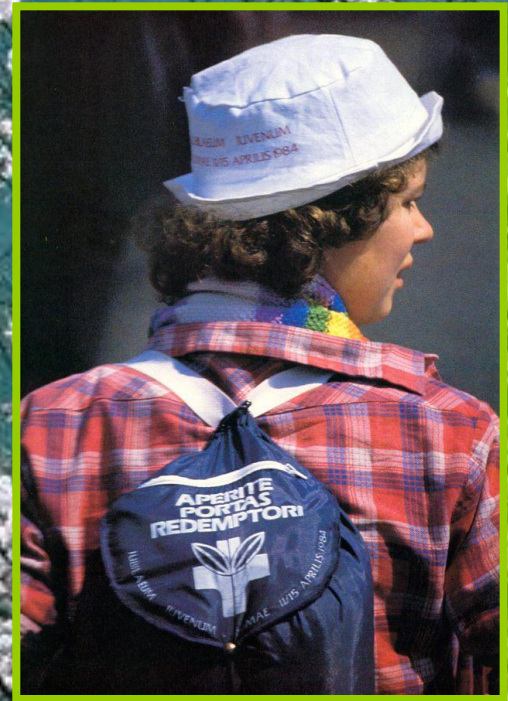


# Understand the people and their circumstances

*«Each person has a ray of goodness»*

*«...be maternally observant in order to know the young person»*

*« It is a great grace to know the people we are called to guide. It is a grace that comes from reflection and prayer.»*








GOODNESS  
THAT  
WELCOMES  
AND  
ENCOURAGES

She recommends to an educator:  
"Eulalia, try to love your  
educators, your pupils, very much.  
Take it as a maxim to praise and  
encourage a good deed rather  
than chastise a fault. Be most  
diligent in the preparation of your  
lessons."

*Characteristics of an educational style*

*affez-vous Eulalia*





*It is rare for young people to  
rebel the goodness shown  
them; discipline is achieved  
with goodness and firmness,  
never asking more than they  
can do.*

*Goodness helps  
them live in the  
holy freedom of the  
children of God.*

*Characteristics of an educational style*

*affeg. sua Essentia*



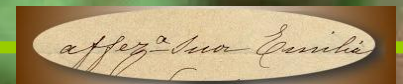
# Let the students take initiative

*«Let the students work,  
help them, direct them,  
but let them take initiative...  
. Do not impose.*

*Only in heaven can we know  
the great influence of  
allowing them to work  
together in an educational  
institution.»*



Characteristics of an educational style





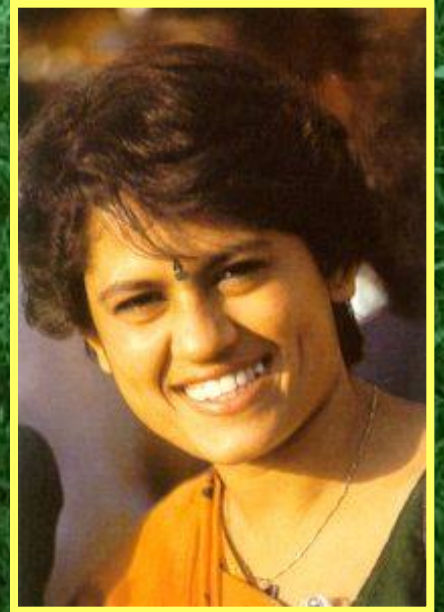
# UNIFED PROJECT: TO FORM WOMEN

*«We all have to work with the same goal, with one heart and one soul:*

***to form women***

*who are empowered,  
upright,  
justly critical,  
open hearted and altruistic,  
apostolic women of the Church,  
the family and society.*

*We are all called to aim at this.»*

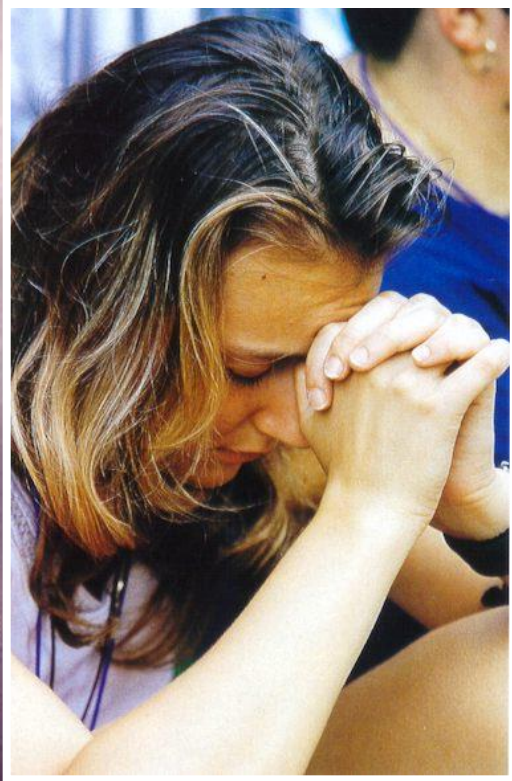


*Characteristics of an educational style*

*affez-vous ensemble*



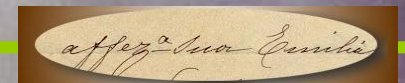
**Help young people  
to meet God  
in the twists and  
turns  
of each day.**



*«Enlighten, enlighten young people  
to experience the joy of those who  
possess God's grace!*

*Let us educate them to experience  
prayer, honesty, love of duty and  
self-denial in small things....  
cheerfulness, like the Angels of the  
Resurrection. »*

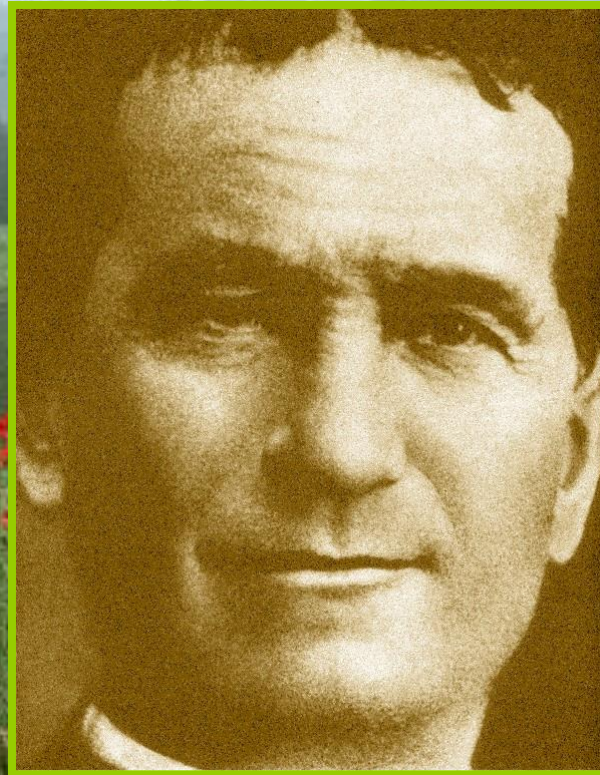
*Characteristics of an educational style*





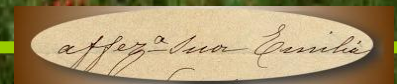
# Look to Don Bosco

*«Let us read  
the life of Don  
Bosco and  
reach out to  
young people  
as he did.»*



*«I wish that  
you be  
educators  
according to  
the heart  
and mind of  
Don Bosco.»*

*Characteristics of an educational style*

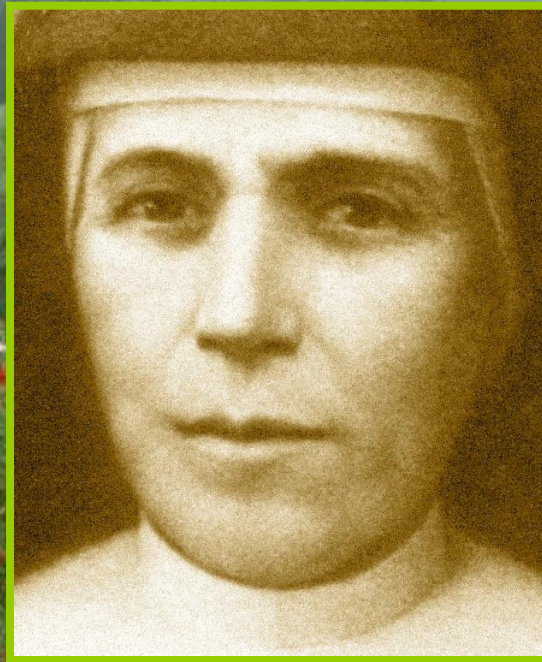




# Look to Mother Mazzarello

*«Be among  
young people  
like sisters and  
mothers»*

*«Be gentle  
and loveable.»*



*"Let the spirit of  
the Motherhouse  
breathe into every  
house and you will  
see how much life  
there will be  
among young  
people.»*

*Characteristics of an educational style*

*affez-sua Geniale*



# Look to Jesus

*"Let us always keep these thoughts in mind:*

*... prayer, charity, and patience,*

*... few words and much sacrifice,*

*... lively recreations,*

*... less demands on the students and more firmness and balance in ourselves."*

*Characteristics of an educational style*

*We often reflect on what the Lord does for us, to lift us up when we fall, to revive our courage, to make us see what we are and what we ought to be... then we do the same with our students and FMA.*





*“Hearts cannot be won if pure love does not make us humble handmaidens of the young people God entrusts to us to lead them to Him.”*

# Look to Mary



*“Talk to Mary like a friend, a mother, a teacher.*

*A Christian educator repeats with Mary:  
“I am the handmaid of the Lord”.*

*Characteristics of an educational style*

